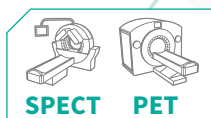


MEDISHARP

SHIELDED NEEDLE BINS



ALL ENERGIES



ASSOCIATED PRODUCTS

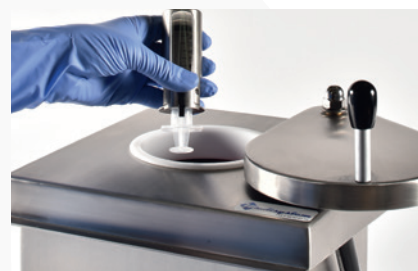
- Mediclic syringe shields
- Easyview syringe shields
- Combined transport trolley

The **Medisharp shielded waste bin** is a **mini benchtop storage cabinet** for used and contaminated **needles**, used to receive needles and syringes after manual injection of radiopharmaceuticals. The **Medisharp Low & Medium Energy** version is available in **2 shielding models**, and features a **lead thickness of 3 mm** to match radioisotopes such as ^{99m}Tc , ^{111}In , ^{201}Tl , ^{177}Lu while the **Medisharp High Energy** version features **16 mm of lead** to ensure the necessary protection when storing waste contaminated with ^{18}F and ^{68}Ga for example. It is made of lead with a **stainless steel finish**, for **easy bacteriological and radioactive decontamination**. **Two openings**, full or partial, are available for improved ergonomics during handling.

The cover can be **fully opened** to allow the collector to be replaced and the interior of the bin to be cleaned.



The **partial opening** available with the pivoting lid allows to adapt to the size of the waste to be disposed of, **thus limiting the exposure of the users**.



A handle on the lid makes it easy to open and close the Medisharp in either the Low & Medium Energy or High Energy model, while limiting the risk of contamination for the operator. This type of shielded waste bin can be placed on a **bench** but also on a **“combined injection transport trolley”** type healthcare trolley.

CHARACTERISTICS

General	Medisharp LME	Medisharp HE
Overall dimensions:	L 217 x D 218 x H 319 mm	L 254 x D 243 x H 349 mm
Internal dimensions:	L 163 x D 155 x H 215 mm	
Weight:	16 kg	54 kg
Radiation protection:	3 mm of lead	16 mm of lead
Packaging:		
Package dimensions:	L 230 x D 250 x H 350 mm	L 300 x D 400 x H 500 mm
Weight:	21 kg	58 kg
Ref.:	00034047	00034048

EFFECTIVE DIMENSIONS (mm)

