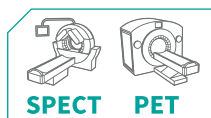


PRA3 & PRA10



SHIELDED BENCHTOP BIN

ALL ENERGIES



The new PRA3 and PRA10 benchtop shielded waste bins are 3 mm or 10 mm lead containers capable of holding needle and healthcare waste (PIMW) collectors required to sort the waste at the end of manual SPECT and PET radiopharmaceutical dose administrations. The PRA3 and PRA10 bins are ideal for storing used and contaminated needles and syringes as well as vials, and are highly functional with their two opening systems: full opening [1] to insert the bulk waste and to replace the PIMW collector or partial opening [2] to reduce the radiation cone as much as possible and thus limit the exposure of the users.

These innovative shielded bins are ergonomic and safe, and feature a welded and resistant removal pin [3] to ensure and secure the removal of the needle from the body of the syringe, avoiding any risk of pricking for users. The 3 mm lead shield for the PRA3 and the 10 mm lead shield for the PRA10 provide the appropriate protection for the different gamma and beta radiations from the radioisotopes handled in nuclear medicine services.



With the anti-tipping system, the shielded waste bins can be placed on a bench or on a “combined” healthcare trolley. Maintenance of the PRA3 and PRA10 is very simple, with a stainless steel lining and watertight welds, disinfection and decontamination even by immersion can be carried out without any special precautions. For absolute security, the new PRA3 and PRA10 models feature an optional key lock.

CHARACTERISTICS

General	PRA3	PRA10
Overall dimensions:	L 297 x D 201 x H 262 mm	
Max. height:	H 315 mm	
Internal dimensions:	L 197 x D 132 x H 181 mm	
Diameter of partial opening:	Ø 60 mm	
Materials:	304L stainless steel mirror-polished on the outside bead blasted on the inside	
Equipment:	needle removal pin	
Weight:	15 kg	30 kg
Radiation protection:	3 mm of lead	10 mm of lead
Compatible PIMW needle collector:	Sharpsafe 2 L (Ref: 4140)	
Package		
Package dimensions:	L 410 x D 320 x H 300 mm	
Weight:	18 kg	32 kg
Ref.:	00039226	00039236

EFFECTIVE DIMENSIONS (mm)

