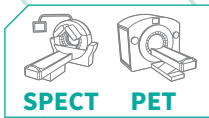


SAFETY STORAGE

MODULAR AND SECURE SHIELDED STORAGE CABINETS

ALL ENERGIES



The Lemer Pax **Safety Storage range of shielded laboratory furniture** is designed to provide **safety and efficiency** within the service. It is **compact and functional**, and can be adapted to all needs in terms of storage, containment and decay of radioactive sources and waste of all energies. This furniture is **extremely modular and versatile**, **seven different configurations** are possible and it can be installed against walls and partitions, in order to integrate perfectly into your premises and adapt to your applications.

The **robust design**, made of high quality stainless steel, allows easy and quick maintenance with the hygiene and decontamination products available in hospitals, without altering the quality of the furniture over time. The brushed stainless steel exterior finish and the **drip-proof draining system** provide an aesthetic and hygienic appearance for the various units and their work surfaces, which are suitable for all handling operations and applications.

Safety Storage units are lockable to ensure **secure and restricted access** to radioactive sources when required.

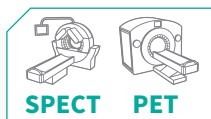
With a **maximum shielding of 25 mm of lead**, all models offer optimal radiation protection for users. All seven configurations are also available in 6 mm and 12 mm shielding to suit all laboratory requirements, size and weight constraints. The four height-adjustable feet allow the shielded unit of your choice to be stabilised and to fit in with the existing elements in the room or laboratory.



STORAGE AND DECAY CABINET



ALL ENERGIES



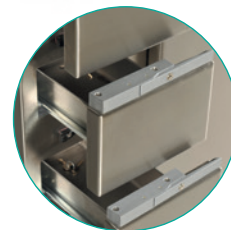
ASSOCIATED PRODUCTS

- L-Block range of shielded screens
- HBI benchtop shielded windows

The storage and decay cabinet is composed of a large work surface with a drip-proof draining system to carry out all the operations to be performed on the benchtop. It is equipped with 4 independent, lockable, shielded drawers for the storage of radioactive sources on the left side. The right-hand compartment, which can also be lockable, features two shelves, creating three separate, wide levels that can be used for decaying radioactive sources and stock solutions at the end of their use.

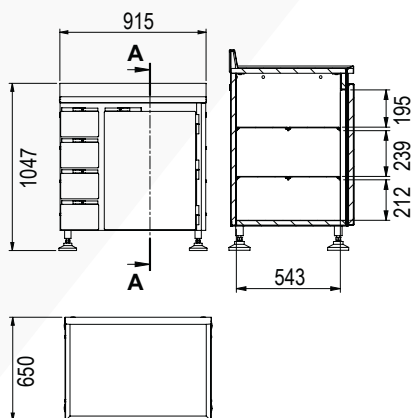


Ref. 00013761-6/12/25



CHARACTERISTICS

EFFECTIVE DIMENSIONS (mm)



General

Overall dimensions:	L 915 x D 650 x H 1 047 mm		
Work surface dimensions:	L 855 x D 575 mm		
Safety:	Lockable drawers and compartments		
Exterior finish:	304L brushed stainless steel		
Interior finish:	Painted steel RAL 9010		
Installation:	Units to be positioned against a wall with attachment kit supplied		
Component parts:	1 304L stainless steel work surface with a rim - 4 shielded drawers - 1 shielded storage compartment with 2 removable bead blasted shelves		
Radiation protection:	6 mm of lead	12 mm of lead	25 mm of lead

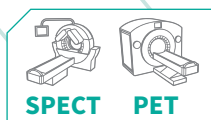
Packaging:

Package dimensions:	L 1 000 x D 570 x H 1 300 mm		
Weight:	480 kg	695 kg	1 162 kg
Ref.:	00013761-6	00013761-12	00013761-25

PREPARATION UNIT



ALL ENERGIES



Ref. 00027217-6/12/25

The preparation unit is composed of two symmetrical and independent shielded compartments, each equipped with two shelves, thus creating three levels available for the storage of sources, consumables and accessories. A large, hygienic stainless steel work surface, perfectly smooth with anti-drip draining system, can accommodate an inclined shielded window for safe handling of benchtop operations.

ASSOCIATED PRODUCTS

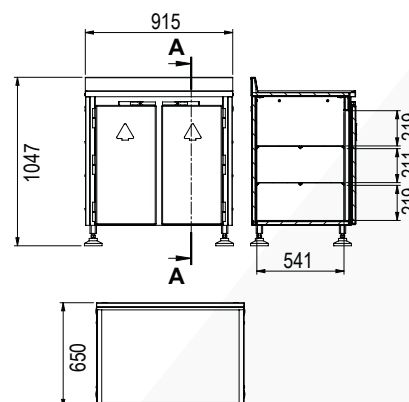
- L-Block range of shielded screens
- HBI benchtop shielded windows

CHARACTERISTICS

General

Overall dimensions:	L 915 x D 650 x H 1 047 mm		
Work surface dimensions:	L 855 x D 575 mm		
Safety:	Lockable drawers and compartments		
Exterior finish:	304L brushed stainless steel		
Interior finish:	Painted steel RAL 9010		
Installation:	Units to be positioned against a wall with attachment kit supplied		
Component parts:	1 304L stainless steel work surface with a rim 2 shielded compartments with 2 removable bead blasted shelves each		
Radiation protection:	6 mm of lead	12 mm of lead	25 mm of lead
Packaging:			
Package dimensions:	L 1 000 x D 570 x H 1 300 mm		
Weight:	496 kg	635 kg	1 257 kg
Ref.:	00027217-6	00027217-12	00027217-25

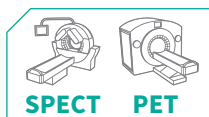
EFFECTIVE DIMENSIONS (mm)



RINSING AND WASTE MANAGEMENT UNIT



ALL ENERGIES



ASSOCIATED PRODUCTS

- L-Block range of shielded screens
- HBI benchtop shielded windows

The rinsing and waste management cabinet is equipped with a sink and an elbow-operated medical mixer tap, and represents a versatile configuration in the Safety Storage range. The hot sink, which can be connected to the service's liquid waste storage room allows contaminated water to be channelled into the radioactive decay tanks, when soaking for disinfection and decontamination of syringe shields or when washing users' hands, for example. This shielded unit also features a shielded cover on the work surface that can be used to access a PIMW collector for used needles, syringes or vials, positioned underneath. The two lockable compartments, located under the work surface, are equipped with two shelves each, providing users with ample storage capacity.



Ref.00014571-6/12/25

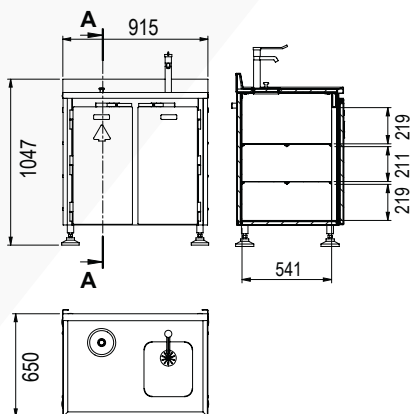


CHARACTERISTICS

General

Overall dimensions:	L 915 x D 650 x H 1 047 mm		
Work surface dimensions:	L 855 x D 575 mm		
Safety:	Lockable drawers and compartments		
Exterior finish:	304L brushed stainless steel		
Interior finish:	Painted steel RAL 9010		
Installation:	Units to be positioned against a wall with attachment kit supplied		
Component parts:	1 304L stainless steel work surface with a rim - 1 shielded waste bin compartment with 2 removable bead blasted shelves -		
	1 compartment with sink fitted with a hygiene lever (NF medical elbow-operated mixer tap) and 2 bead blasted shelves (not shielded)		
Radiation protection:	6 mm of lead	12 mm of lead	25 mm of lead
Packaging:			
Package dimensions:	L 1 000 x D 570 x H 1 300 mm		
Weight:	400 kg	620 kg	1 110 kg
Ref.:	00014571-6	00014571-12	00014571-25

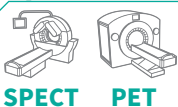
EFFECTIVE DIMENSIONS (mm)



STORAGE AND DECAY UNIT WITH WASTE COMPARTMENT



ALL ENERGIES



ASSOCIATED PRODUCTS

- L-Block range of shielded screens
- HBI benchtop shielded windows



Ref.00013768-6/12/25



The storage and decay cabinet consists, on the left, of a set of four independent, lockable, shielded drawers for the secure storage of radioactive sources. On the right, a very large lockable compartment also allows the positioning of a large capacity container for potentially infectious medical waste (PIMW), for example. It provides direct access to the work surface, which is enclosed by a shielded cover, thus limiting the exposure of users during benchtop operations.

CHARACTERISTICS

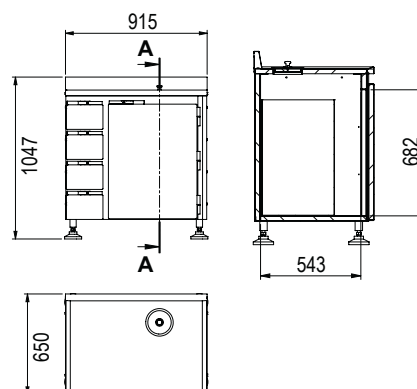
General

Overall dimensions:	L 915 x D 650 x H 1 047 mm		
Work surface dimensions:	L 855 x D 575 mm		
Safety:	Lockable drawers and compartments		
Exterior finish:	304L brushed stainless steel		
Interior finish:	Painted steel RAL 9010		
Installation:	Units to be positioned against a wall with attachment kit supplied		
Component parts:	1 304L stainless steel work surface with a rim - 4 shielded drawers - 1 shielded waste bin compartment (max. volume 60 L)		
Radiation protection:	6 mm of lead	12 mm of lead	25 mm of lead

Packaging:

Package dimensions:	L 1 000 x D 570 x H 1 300 mm		
Weight:	453 kg	670 kg	1 137 kg
Ref.:	00013768-6	00013768-12	00013768-25

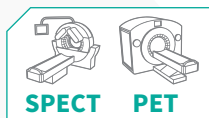
EFFECTIVE DIMENSIONS (mm)



DECAY UNIT



ALL ENERGIES



ASSOCIATED PRODUCTS

- L-Block range of shielded screens
- HBI benchtop shielded windows



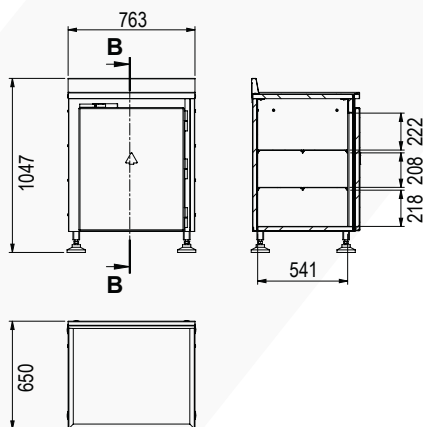
The decay unit is a compact, functional, space-saving and versatile shielded unit. It is a perfect alternative to the usual source storage cabinet, and provides a handling space with a hygienic work surface with an anti-drip draining system as well as a secure storage space on three levels for constancy sources and other radioactive preparations and stock solutions.



Ref.00014569-6/12/25

CHARACTERISTICS

EFFECTIVE DIMENSIONS (mm)



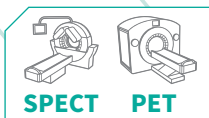
General

Overall dimensions:	L 763 x D 650 x H 1 047 mm		
Work surface dimensions:	L 757 x D 638 mm		
Safety:	Lockable drawers and compartments		
Exterior finish:	304L brushed stainless steel		
Interior finish:	Painted steel RAL 9010		
Installation:	Units to be positioned against a wall with attachment kit supplied		
Component parts:	1 304L stainless steel work surface with a rim 1 shielded compartment with 2 bead blasted shelves		
Radiation protection:	6 mm of lead	12 mm of lead	25 mm of lead
Packaging:			
Package dimensions:	L 1 000 x D 570 x H 1 300 mm		
Weight:	375 kg	563 kg	964 kg
Ref.:	00014569-6	00014569-12	00014569-25

STORAGE UNIT



ALL ENERGIES



Ref.00014568-6/12/25

The storage unit is dedicated to the secure containment of radioactive sources for services handling many different radioactive isotopes. It consists of nine independent shielded sliding lockable drawers. It is more functional than a standard storage system, thanks to its size and large storage capacity, and also offers a large, flat preparation area, for improved user comfort on a daily basis.

ASSOCIATED PRODUCTS

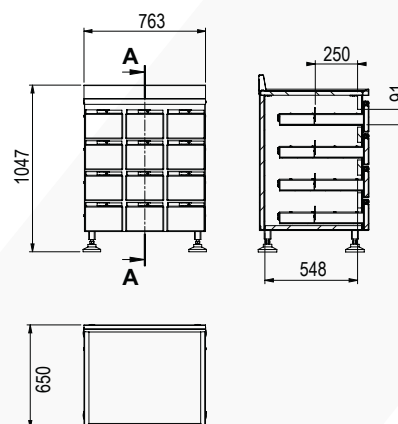
- L-Block range of shielded screens
- HBI benchtop shielded windows

CHARACTERISTICS

General

Overall dimensions:	L 763 x D 650 x H 1 047 mm		
Work surface dimensions:	L 757 x D 638 mm		
Safety:	Lockable drawers and compartments		
Exterior finish:	304L brushed stainless steel		
Interior finish:	Painted steel RAL 9010		
Installation:	Units to be positioned against a wall with attachment kit supplied		
Component parts:	1 304L stainless steel work surface with a rim 12 shielded drawers		
Radiation protection:	6 mm of lead	12 mm of lead	25 mm of lead
Packaging:			
Package dimensions:	L 1 000 x D 570 x H 1 300 mm		
Weight:	488 kg	685 kg	1 103 kg
Ref.:	00014568-6	00014568-12	00014568-25

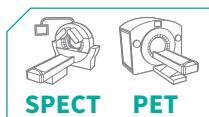
EFFECTIVE DIMENSIONS (mm)



WASTE MANAGEMENT UNIT



ALL ENERGIES

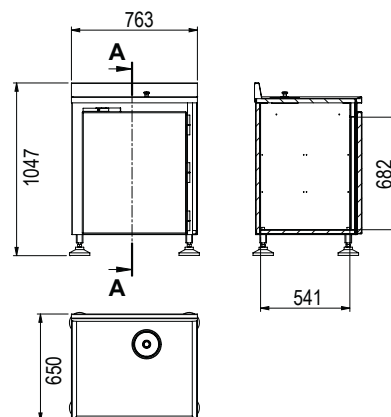


ASSOCIATED PRODUCTS

- L-Block range of shielded screens
- HBI benchtop shielded windows

The waste management unit is a compact shielded module that can accommodate very large containers including potentially infectious medical waste containers (PIMW). Access for the insertion of contaminated waste is facilitated by a trap door positioned on the work surface, and fitted with a shielded cap. The large, resistant work surface can also accommodate the PRA3 and PRA10 shielded needle bins to facilitate the sorting of the service's various waste materials.

EFFECTIVE DIMENSIONS (mm)



Ref.00027212-6/12/25

CHARACTERISTICS

General			
Overall dimensions:	L 763 x D 650 x H 1 047 mm		
Work surface dimensions:	L 757 x D 638 mm		
Safety:	Lockable drawers and compartments		
Exterior finish:	304L brushed stainless steel		
Interior finish:	Painted steel RAL 9010		
Installation:	Units to be positioned against a wall with attachment kit supplied		
Component parts:	1 304L stainless steel work surface with a rim 1 shielded waste bin compartment (max. volume 60 L)		
Radiation protection:	6 mm of lead	12 mm of lead	25 mm of lead
Packaging:			
Package dimensions:	L 1 000 x D 570 x H 1 300 mm		
Weight:	350 kg	540 kg	942 kg
Ref.:	00027212-6	00027212-12	00027212-25

All the shielded furniture models in the Safety Storage range are compatible with the L-Block range of radiation shields. The combination of these two product ranges offers users versatile and secure working and storage environments, with considerable space optimisation, while guaranteeing appropriate radiation protection for the radioactive sources handled. The great modularity of these two product families allows the creation of customised sets adapted to the specific applications of each service.

